

# Japanese Sword Society of the United States, Inc.



## NEWSLETTER

---

Volume 13 No. 1

January-February • 1981

---

# ELECTION OF OFFICERS

1981-1982 TERM OF OFFICE

The following members have been elected, by acclamation, to serve a two year term-of-office:

Chairman.....Peter Bleed  
Executive Vice Chairman..John Tischmann  
First Vice Chairman.....A. Z. Freeman  
Second Vice Chairman.....Neil Keen  
Secretary.....Bill Miller  
Treasurer.....Ron Hartmann

On behalf of all the membership, Good Luck during your term in office. Your guidance and leadership will benefit us all.

Our sincere thanks to retiring Chairman, Robert M. Lewert, for his service to us during his two terms of office. Bob was Chairman during 1977/78 and was a significant factor in seeing Token Taikai '79 become a reality. Because of this involvement he agreed to stay as Chairman these last two years, seeing TTK'79 through to completion and as a huge success. Again, sincere thanks are due Bob for all he has done for us.

Our new Chairman is one of the "old timers" in sword circles and will most definitely be a sincere and energetic leader for the Society. Pete has been in contact with the "Newsletter" and has expressed some of his goals during his time in office. They are energetic plans, and plans which will once again advance the JSS/US in recognition as the most beneficial Society for sword study outside of Japan. Pete will present an Open Letter to the membership in the next issue of the "Newsletter" in which he will outline his goals and objectives during these next two years. Give him your support through your suggestions and active cooperation.

---

The Official Bi-Monthly Publication of the Japanese Sword Society of the U.S./Inc.

---

NEW DIRECTORS -

At present there are six directorships open (the latest due to the untimely death of Bill Trevino). The remaining Directors in office will select and appoint six members to fill these open positions, to complete the term of office of each position in accordance with our Society By-laws. This task should be done soon and the new Directors announced in the next issue of the "Newsletter". Anyone wishing to be considered for appointment as a Director should contact the new Chairman immediately.

NEW MEMBERS -

The following new members are welcomed into the Society:

Dan O'Connell,  
Louis E. Corsi,  
Fred R. Herold,  
William Hager,  
David Hidaka,  
John S. Rice,  
Stanley K. Grant,  
Ronald J. Rutkowsky,  
Steve Balazs,  
\* Sam C. Saunders,  
Edward S. Small,  
Kenneth L. Mayo,  
Rodney M. Jones,  
Gerald H. Miller,  
Willis J. Moogk,  
Wayne M. Svejnoha,  
Peter M. Geick,  
Harvey Whitehouse,  
George Hinson-Rider,  
Joseph Conti, Self Defense Inc.,  
Brian T. Amano,  
William G. Trost III,  
Marvin Cypert,  
William R. O'Reilly,  
E. N. Standfield,  
\* Roed,  
Allen M Huie,  
Jack Wanderman,

JSS/US MEMBER DECEASED -

It is with deep regret that I must announce the death of one of our fellow members, William (Bill) Trevino who died suddenly December 14th, 1980.

Bill was born in Chicago, Illinois on January 9, 1934. He moved to Mexico City in 1942 where he finished high school. In 1952 he entered in the U.S. Navy and served as a Corpsman for four years.

Bill received his B.A. degree from Mexico City College in 1959 and continued his graduate studies in psychology, history, and Spanish at North Texas State. It was at NTSU that Bill met and married Shirley Sivey. Bill is survived by his wife Shirley and their two daughters, Tracey 17 and Deidna 9.

During Bill's tour of duty in the navy he was stationed in Japan. This is where he was first introduced to the Japanese Art Sword. He began intense involvement with the Japanese Art Sword in 1965, expanding his understanding through polishing studies in 1973. Seikichi Kurokawa was Bill's Senei for learning polishing. In 1976 Bill founded Nihontō Kemma which offered a full line of services to the collector of the sword.

A collector of the sword and one of the few serious U.S. sword polishers, Bill was truly a friend of the Japanese sword and to fellow collectors. His easy manner and friendly personality was always most welcomed at the various sword events. Bill's mannerisms made it easy for everyone to like him and to respect his efforts in collecting and polishing.

Bill helped in the organization of Token Kenkyu Kai (Dallas 1972), he wrote several articles for the JSS/US publications and the BUJIN, and was featured in local newspapers. Most recently he was deeply involved in the CELEBRATION OF JAPANESE ART which was held in Dallas early last year. Bill seemed to enjoy this event most deeply, writing in his article which appeared in the September-October issue of the JSS/US "Newsletter", I quote, "I found this time to be the best thing that had happened to me since I found my first sword."

I believe another height in Bill's life was his carefully prepared book entitled, "The Japanese Sword Question & Answer Book", published in 1978. Here he turned his efforts toward the new and novice collector in an effort to enlighten them about the sword.

Even the use of the sword was of keen interest to Bill and he became one of the founders of the Dallas Kendo & Iaito Club which was started in 1977. The rank of Shodan 1st Degree Black Belt was bestowed upon Bill. It was at the end of one of these meetings that Bill succumbed to a heart attack. Although an untimely death, I do believe that he died doing something he really loved, something related to the Sword. Bill will be greatly missed by all who knew him and enjoyed his friendship. He left with us the image of a devoted husband, father, collector, polisher, and....friend.

Mike Quigley

## BIRMINGHAM SWORD SHOW COMING SOON -

The next major sword event will be the Southeast Tokenkai show scheduled for the weekend of February 13,14,15th in Birmingham, Alabama. This is always a good gathering and rewarding education for everyone attending. Make it a mini-vacation and bring your wife for a complete weekend.

Several exhibits are expected along with the attendance of John Yumoto, who will lecture on sword fittings. If things work out as planned, a film will be shown picturing sword forging during the Dallas sword event which was held spring of last year. Anyone with an expertise in a specific area of study is urged to bring a few exhibit items along for display. Lets not only make this a well attended event, but a worthy study event too. It only takes a very minimum amount of personal effort.

Registration begins at 1 PM Friday with formal show opening being at 8 AM Saturday the 14th. Sunday's events will run as long as people are willing to participate. Table prices are \$35 (for the entire weekend) with none-table holders fees of \$20 being charged. Hotel prices increased this year (what hasen't?) and are \$30/single and \$36/double. All reservations can be made thru Paul Couch.

For security reasons, admission will be by JSS/US membership or by filling out a complete registration data card at the show registration desk. Obviously a few people will object to this requirment, but it is for our own good. Please cooperate fully.

Registration can be had by contacting Paul Couch

Plan to attend, but also plan to be active. Bring some sort of item for personal display. Doing so will prove to be both a personally rewarding experience and a greatly appreciated contribution towards the educational aspect of the show.

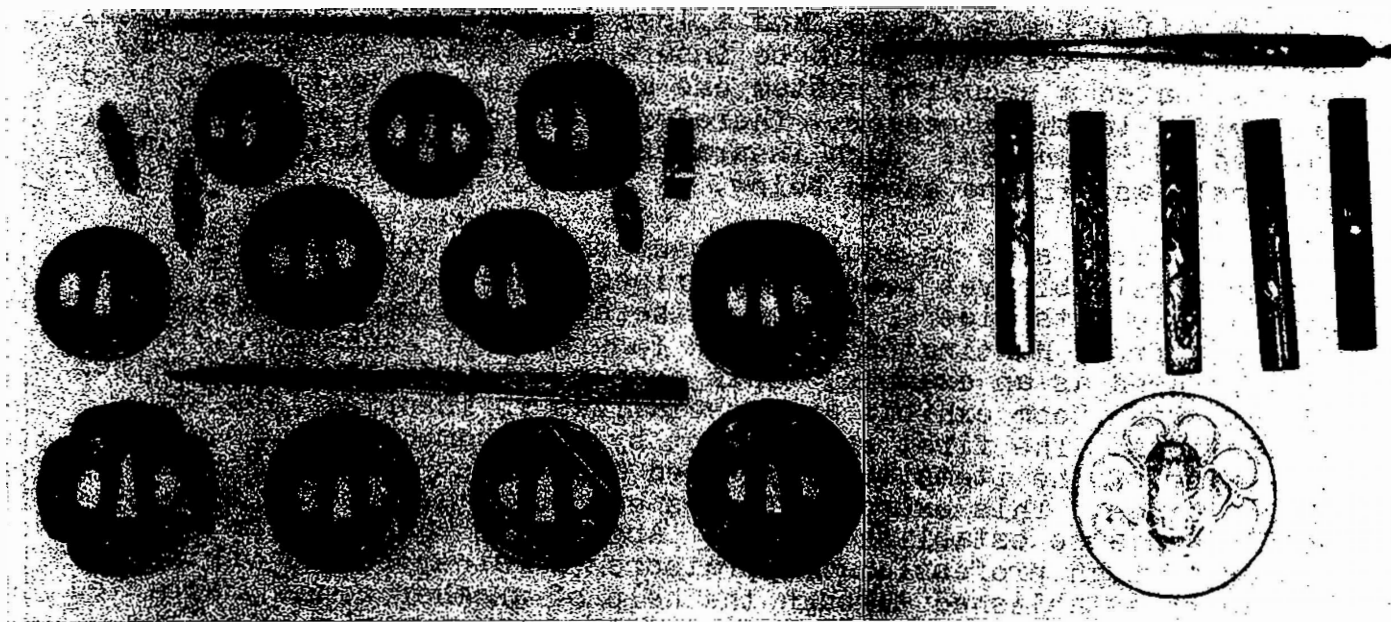
A JSS/US table (supplied per gratis) will again be present supplying Society information and supply sales. Stop by and say hello!

## SEVERAL MORE SWORD THEFTS REPORTED

The "Newsletter" has been advised of several thefts of late. Mr. Scott Nekrosius of Centerville, Ohio wrote the NL that some 40 swords, 30 tsuba, and several yari were stolen from his home recently. Although no detailed descriptions of these items are available, Scott did mention that most of his swords had an area of black with white lettering on the mune of the nakago area, with his catalogue I.D. code written on it. Although it would seem a logical thing to remove such obvious I.D., it is very possible that the lowly dogs that stole these things would not have the sense to do so. Please be on the lookout for such I.D. coding on any blades which may come your way. Contact Mr. Scott Nekrosius

STOLEN ITEMS cont'd.

The "Newsletter" was also advised of the theft of several pieces of kodogu from the collection of Ms. Annette Vincent, Tucker, Georgia. Although no greatly detailed description is available, the following photographs will give some indication as to identification. Obviously some very desirable items were taken and are of such a motif to make them rather easily recognizable.



Anyone suspecting the location of these stolen items should contact Ms. Annette N. Vincent,

\* \* \* \* \*

SECURITY FOR YOUR COLLECTION -

The past two years has seen a good number of sword/kodogu thefts across the United States. Such losses are not only great financial losses, but emotional losses in that most collections are very close to the owner's heart. Alarm systems, security systems, whatever....can at times prevent such losses although outright robbery can not be guarded against. Several such armed robberies have taken place. When someone puts a gun to your head, the most elaborate security system will fail. If one is singled out for such a "hit" then the only back-up would be insurance, to at least "ease" the financial loss. Several suggestions are in order which, if heeded to, will at least either make such thefts more difficult, or, financially recoverable. The following suggestions will at least help. It is assumed that these suggestions are applicable both in the U.S. and in other countries.

1. Have a thorough record of your collection. A photographic record along with oshigata (of swords) and detailed dimensions and other particulars are a must. Since all of the items we collect are individually made, one-of-a-kind items, such detailed information will quickly and positively identify such items. Most collectors do not take this most preliminary step towards security. The Society sells "record sheets" which will provide a basic format for such records.

SECURITY cont'd.

2. For the casual burglar, a safe will provide some protection. True, a professional will quickly gain entrance to a safe, but such security will prevent loss from the novice crook plus provide protection from loss by fire or other natural disasters. Often, used safes are available for nominal costs, or one can rent space in a local bank vault.

3. If all else fails, and a loss is realized, then the least one can fall back onto would be insurance. Again, no matter how sophisticated a security system one may devise, a "gun to the head" will yield to the aggressor. Therefore, any collection should be covered by insurance. Such insurance is available with a minimum of hassle as will be shown below.

The first step in acquiring insurance on a collection is to locate a reliable yet reasonably priced company which would offer such a fine arts rider. Although there must be many such companies to choose from, Huntington T. Block Insurance of Washington, D.C. will be used as an example. This company insured the Token Taikai '79 Meibutsu Room exhibit and specializes in insuring fine art collections. The first requirement by this company was to compile a listing of the items to be insured and to get an appraisal on these things. This exercise forces one to catalogue one's collection and also establish values. Appraisals can be formally gotten through professional appraisors (a rather costly venture) or can be established through the help of another company approved collector. Once this listing is compiled and appraisals gotten, the company will put down a few security restrictions and then issue a policy. Although costs may vary from company to company and in accordance with home construction, if a bank vault is the place of storage, etc., but will most likely average out to about \$2/\$1,000 insurance. Although nobody enjoys paying an annual premium on insurance, at this nominal cost the peace of mind is a wonderful feeling. Such policies are also written to handle the normal additions and deletions usually experienced in any collecting field, which can be handled very easily through a semi-annual updating of one's list of items.

Perhaps if we all work together in locating stolen goods and prosecute the crooks when they are caught, the present rash of thefts can be stopped. But meanwhile, complete cataloguing and proper insurance coverage is still a highly recommended first step.

(It should be mentioned that of the many losses reported by the "Newsletter" during the past two years, several recoveries were made, thanks to the quick action of some of our members. It takes some real personal commitment on the part of a collector, upon realizing that he has purchased stolen goods, to turn them in to the authorities. Far too often "thanks" are not heard and some financial loss is even realized by the well-meaning finder, but the real benefit is in helping to stamp out such dealings in stolen property. Our thanks to all who have contributed to the recovery of such stolen items. Honesty pays off in the long run!)

MASATAKA GENDAITŌ  
Oshigata and article by  
Mr. Bob Coleman

STYLE/FORM - Tachi (slung sword), shinogi-zukuri form (made with ridgeline), ihori-mune (two-sided back edge), chū-gisaki (medium sized point). Blade length 2.16 shaku width at habaki 1 sun, width at kissaki 7 bu. Sori is 6 bu and blade thickness is 2.5 bu.

FORGING - Itame (wood grained) hada.

HAMON - Ko-choji (small clove pattern).

NAKAGO - Ubu, 6.5 sun long, kiri yasurimei (straight-across file marks). Signed and dated with mon.

SIGNATURE - tachimei: MINATOGAWA JINGYA MASATAKA with KIKUSUI mon.  
dated: Showa ju Shichinen Kugatsu (October 1942)

EXPLANATION -

Masataka's family name is Kaname Moriwaki. He was born in Meiji 44. In March of Showa 3, he became a student of third generation Hoki Koku Shimizu Toshiro Yoshiyuki. He furthered his studies of metallurgy in April of Showa 10 when he worked under Dr. Kudo Haruhito at the Hitachi Edged Tool Studio. In Showa 12, Mr. Kaname worked at the Yasukuni Jingya. During this time, his teachers were Kajiyama Yasunori, Ikeda Yasumitsu and Kotani Yasunori. After his apprenticing at Yasukuni Jingya, Mr. Kaname worked at Kotokumura in Totsutori Prefecture. He worked there until showa 15. During this period of Showa 12-15, he made approximately 250 swords using the mei "Morimitsu" and "Hoki Koku Morimitsu".

In Showa 15, the Japanese navy established a forge at the Minatogawa Jingya near Kobe. Through recommendations from his teachers at the Yasukuni Jingya, Mr. Kaname was offered the position of head instructor and swordmaker. Minatogawa Jingya is associated with Kusunoki Masanari and Kusunoki Masayuki - two famous samurai who devoted their lives to Japan. These men were greatly admired by the Japanese navy. For that reason the navy adopted the use of the Kusunoki Kikusui mon (half kiku in water)



Mr. Kaname Moriwaki

MASATAKA cont'd.

as a symbol of faithfulness. When the forge was established, Mr. Kaname was given the name "Masataka" and also the "Kikusui mon".

At the request of the navy, the swords made at the Minatogawa Jingya were executed in ko-Bizen style. Hamon was either suguha or ko-choji form. Military swords were limited to a maximum length of 2 shaku, 2 sun with a sori of 6 bu. Upon completion, the swords had to pass a Quality Control shinsa. After shinsa, they were sent to the Naval Academy for issuance.

The swords produced by Mr. Kaname at the Minatogawa Jingya are signed Masataka, Minatogawa Jingya Masataka and Minatogawa no Han Masataka. During the 4½ years he worked at the Minatogawa Jingya, he produced about 1,000 swords. Among these were twelve presentation pieces ordered by Admiral Yamamoto and given to Fleet Commanders as prizes. Of the twelve swords produced, eleven were lost at sea during the war.

Since the war, Mr. Kaname established and is President of the Kikusui Forging Co. in Yonago. He was licensed as a swordmaker on September 4th, Showa 27. He presently uses the mei Masataka, Hoki Koku Masataka and Hoki Koku Moriwaki Masataka saku. He works in both Bizen and Soshu style. Presently, Mr. Kaname is Director of the Ynago Branch of N.B.T.H.K. and a sword Registration Judge for the Japanese agency for cultural affairs. He is also the founder and Chairman of the West Japan Branch of the All Japanese Swordsmith Association.

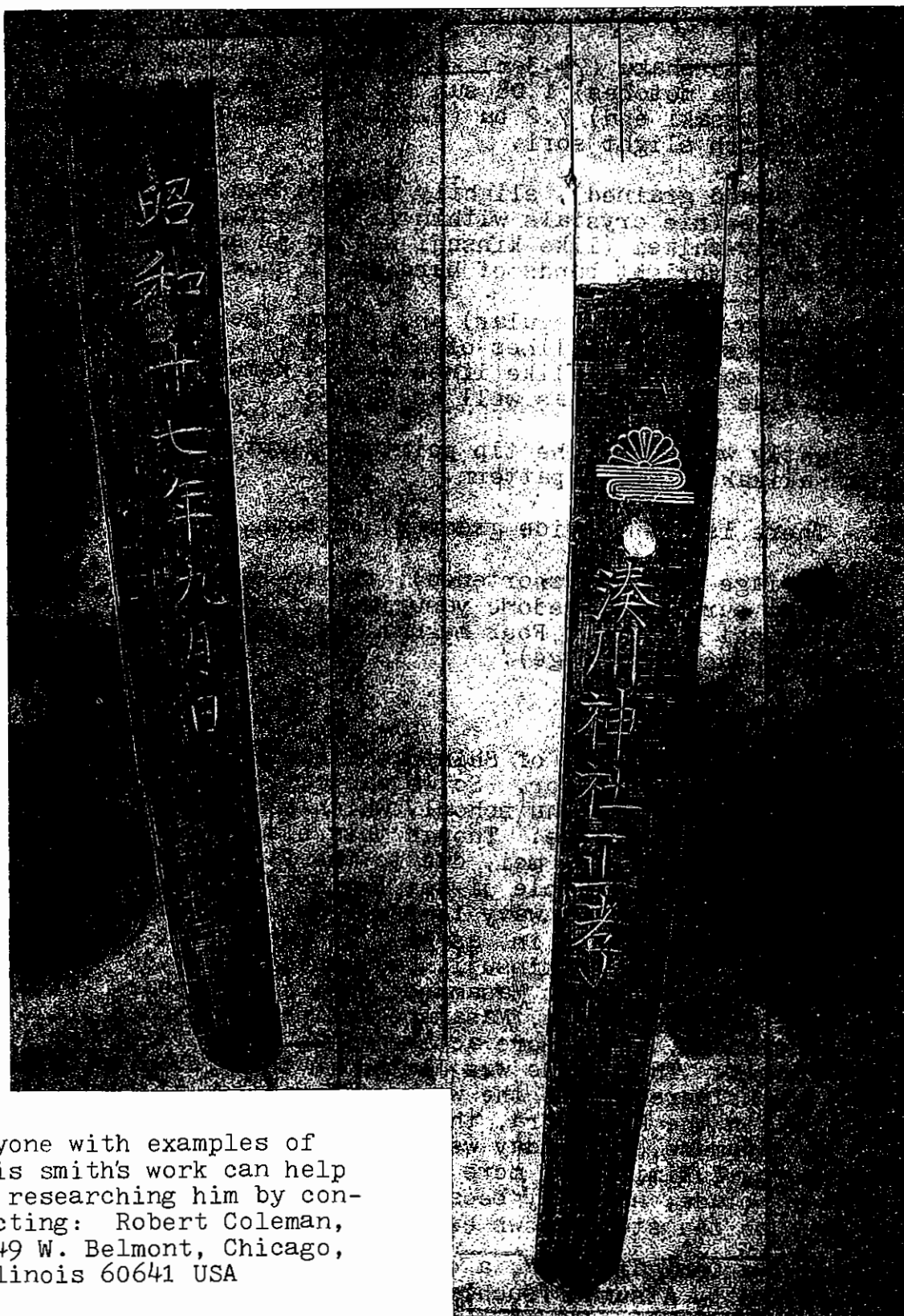
Awards won by Kaname Moriwaki are: Showa 15 - "The Prime Minister's Prize" (for a sword owned by General Nishio, Commander of the Dispatched Army in China). Showa 15-18 - Four prizes from Admiral Yamamoto. Postwar awards (partial listing) - "The Prime Minister's Prize", The Prize of Chinese Culture", The Prize of Education of Totsutori Ken".

Postscript -

I had the opportunity to meet Mr. Kaname in October of 1979 while on John Yumoto's sword tour. At that time he did not own any of his war period swords. Upon returning home, I discovered that I had purchased one of his swords the day before I left for Japan. Curiously, I could not find his distinctive kikusui mon. However, I decided to return this sword to him as a present. Upon receipt, he wrote me about the sword and explained the absence of the kikusui mon. After examining the sword, Mr. Kaname discovered a slight muneware under the rust. He also said that both the kikusui and his mei had been removed and his signature recut at a later time by someone else. He theorized that the sword had been rejected by the navy shinsa and at some later date recycled into use by the army. According to Mr. Kaname, his blades should only be found in navy gunto mounts. Curiously enough the tachi depicted in the oshigata (this article) is in army gunto mounts also.

I am interested in obtaining information on or purchasing other swords by Masataka or any of his students at the Minatogawa Jingya (students work will also bear the kikusui stamp).

MASATAKA tachi oshigata



Anyone with examples of this smith's work can help in researching him by contacting: Robert Coleman, 4149 W. Belmont, Chicago, Illinois 60641 USA

YUKIMITSU (Attributed) ca. 1264

JŪYŌ TŌKEN NADO ZUFU - Vol. 1 Plate 8 (reprinted with permission)

STYLE - Tachi, shinogi-zukuri (with ridgeline), ihori-mune (two-sided back edge), shallow sori (curvature), chū-gissaki (medium size point), stout blade. O-suriage (cut short).

MEASUREMENTS - 2.45 shaku (74.3cm), 6 bu sori, motohaba (width at base notches) 1.08 sun (3.3cm), sakihaba (width at kissaki end) 7.2 bu (2.2cm). Nakago 7 sun plus with slight sori.

KITAE - Itame (wood grained), slightly coarse, and this is full of ji-nie (nie crystals within ji or surface of blade), with many chikei (like kinsuji within ji surface) and yubashiri (bright bands of hard steel showing).

HAMON - Ko-midare (small irregular) and gunome (peaked pattern), frequent sunagashi (lines of nie) and frequent kinsuji (bright solid threadlike lines within hamon) all over. Very wide nioi line as well as ko-nie.

BŌSHI - Slightly wavy with the tip pointed slightly, and this is in hakikake (swept) pattern.

HORIMONO - There is bō-hi (wide grooves) on both sides.

NAKAGO - O-suriage (greatly shortened), tip in kiri (cut straight), slight curvature, redone yasurime (file marks) in kiri (straight across). Four mekugi-ana (holes), mumei (unsigned due to suriage).

EXPLANATION -

Yukimitsu was a student of Shintōgo Kunimitsu, and he adopted Masamune as his successor. So we can call him the forerunner of the Sōshu-den or Sōshu school, which reached its zenith with the famous Masamune. Though this blade is shortened considerably and has no mei, due to the fact of ji-nie on the itame grain, and ample ji-kei (chikei?), together with the notare (the gentle, wavy temper-line) with many ko-midare and gunome mixed in, as well as the nioi...the blade with nioi, and full of kinsuji...all these give you the idea that Masamune, the great Masamune, will soon appear. From this type of temper-line, Masamune refined and added a little more gentleness, and a more active kitae or grain of the steel itself. This blade was listed in the "Tsuchiya Oshigata",\* and was considered to be the work of Yukimitsu at that time. Later on, in the Meiji Era, there was a theory that it was made by Sadamune, but today we feel that the old evaluation of it as by Yukimitsu is more appropriate. This is a very important blade, not only because it is in perfect condition, but because the steel shows excellent workmanship.

\* "Tsuchiya Oshigata Shū", a collection of oshigata in 8 volumes compiled by Atsunao Tsuchiya (1782-1852), a samurai of the Tokugawa who lived in Edo and was chief of firearms for the Shōgun. He wrote many books on swords. This work had an excellent reputation.



NAOE SHIDZU OSHIGATA

by Mr. Andy Quirt

Katana, mumei (unsigned), inscribed:  
"Higo no Kuni Naokage Agheshita" which  
means "shortened by Naokage, a member  
of the Higo Dotanuki school around  
1825. Shumei (?) on omote "Naoe Shidzu".

Length: 2.17 Shaku (65.8cm)

Mino Province work from Nambokucho  
period (late 1300s).

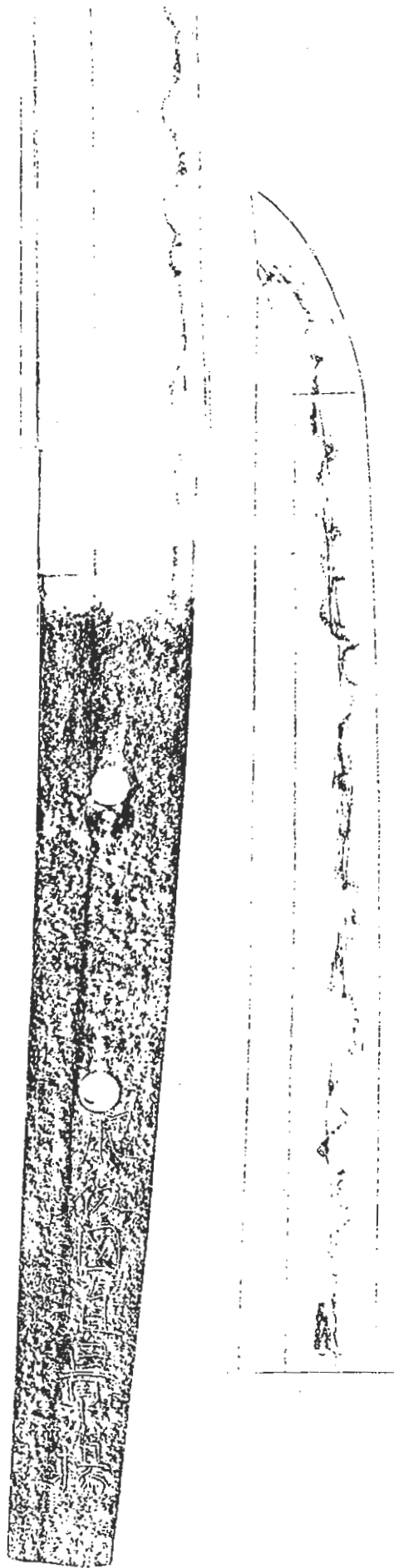
Hamon is nie deki (primarily tempered  
in nie) of gunome midare (irregular  
pointed pattern), ashi (nioi tailings  
from roots of gunome), some yo ("foot  
prints" of nioi patches below yakiba).  
Kinsuji (solid thread-like lines with-  
in hamon) and sunagashi (lines of nie  
through peaks of gunome).

Jigane (forging) is strong masame  
(straigh running forging) with  
profuse ji-nie (nie within ji or  
surface of blade) and chikei (like  
short kinsuji but within hada of blade).

Remarks: After Kaneuji left Yamato  
province and his studies with the  
master Masamune, he founded a forge  
at the foot of Mt. Shidzu in Mino  
province. He became known as Shidzu  
Saburo Kaneuji. Some of his Students  
then moved to the base of Mt. Naoe in  
Mino and the swords that they produced  
were known collectively as "Naoe Shidzu".  
In shape, strength of the masame hada,  
and the presence of the gunome with  
ashi and yo with long kinsuji running  
through them, this blade resembles  
the works of Yamato Shidzu of late  
Kamakura period or early Nambokucho.

This sword is in polish and mounted in  
shirasaya with gold foil habaki. Saya  
gaki (attribution on the saya). The  
blade has NBTHK Tokubetsu Kicho (green  
papers) from 1967.

Koshirae is Karagi Samezaya, Fuchi-Kashira,  
tsuba and menuki are gold kiri mon on  
shakudo nanako ground of probable Goto  
work or Yoshioka work. The koshirae has  
Mr. Murakami's Saijo saku certificate.



## UNDERSTANDING SWORD PERIODS -

With the growth of the Society this past year and realizing the percentage of this new membership which are just starting out in this complex field of study, some basic, foundation material will be included in each issue of the "Newsletter" during 1981. One of the most basic pieces of information needed to be learned is understanding the various sword periods. There continues to be some confusion when trying to say that one period ends one place and another starts there....and this is because various books will give various answers, depending on the author's teachings. Today, with the advanced communications of today's world, these differences seem to have been somewhat resolved. The more-or-less "accepted" categories are listed below, being used most commonly around the world today.

It should also be understood, when discussing sword periods, that the Japanese names do have a meaning. The word "tō" is sword. The word "kō" means old, whereas "shin" means new and "shinshin" refers to new-new meaning. "Gendai" means period or "made in the old way". "Showa" refers to items from the Showa era (1926 through today). Therefore, understanding these terms, kōtō, shintō, shinshintō, gendaitō, showatō.....all take on a more understandable meaning. These "meanings" are not totally correct but are correct with regards to swords.

Heian Period	806 - 1183	
Kamakura Period	1184 - 1333	Early 1184 - 1218 Mid 1219 - 1277 Late 1278 - 1333
Yoshino Period	1334 - 1393	Also known as Nambokuchō Period or time of North and South courts.
Muromachi Period	1394 - 1466	
Momoyama Period	1467 - 1595	Also known as the Sengoku Period or the age of wars.
Early Edo Period	1596 - 1780	
Late Edo Period	1781 - 1867	
Gendai Period	1867 - 1925 and thru today.	Generally meaning swords made after the Meiji era, but in the traditional manner of forging.

To group these periods into general periods, the general accepted practice (using Fujishiro's texts as a guide), kōtō period is from Heian period through Momoyama Period. Shintō period then starts and continues through Horyaku era (1763). The shinshintō period then begins and continues through to the Taishō era ending in 1925. The Gendai Period overlaps the end of the shinshintō (depending on what school of thought you wish to live by).

PERIODS cont'd.

One of the best discussions on the various sword periods was presented by Albert Yamanaka during his "Nihontō Newsletter" series. A series of articles entitled, "History of Japanese Swords", gave a brief but thorough general outline of the various sword periods and the evolution of the sword during each of these periods. This series will be presented during 1981 by the "Newsletter". Although this series might be somewhat redundant to some of us, it will serve to lay a good basic foundation to our many newer members as they attempt to understand the art of the sword.

MASAHIDE CONTROVERSY; WORD FROM GERMANY -

The "Newsletter" recently received an interesting and lengthy letter, with regards to the "Masahide Controversy", from member Mr. Klaus Leibnitz of West Germany. The letter was one of concern for the Society and it is presented in part, below.

"As a European member and a person who knows neither Mr. Bowhay nor Mr. Benson, I may perhaps be permitted to speak out as I see the problem presently being discussed with much ado in the "Newsletter", without being accused of being a partisan of one or an enemy of the other party."

Mr. Leibnitz goes on to point out, "I understand that the "Newsletter" is a voice of the membership, open to all members of the JSS/US and a healthy critic based on cholarly arguments bringing life into dull data and descriptions. But the very moment we, devoted to the finding of facts and not to cheap polemics, leave the scholarly attitude behind us and engage in a "free for all" the danger exists that our Society is not taken serious anymore by bodies staying on the firm facts of scholarly research. This is what has been said here in Germany about the discussion and also by other organizations who know about this controversy."

The point that Mr. Leibnitz brings out in fact shows us two things which we should remember. First, the JSS/US has an international following today and is looked upon as a leader in the field of sword study. Secondly, since we are looked up to as a virtuous Society, we must guard against the degrading of our publications by being caught up in scholarly controversies which have become personal feuds. It is a thought to be remembered. As the present editor for our publications, I will try my best to follow Mr. Leibnitz's suggestions when printing future controversial articles.

It is encouraging to hear that the JSS/US publications are receiving the attention of our distant members. Mr. Leibnitz has promised us some material from Germany telling about the many fine items in private German collections. We can look forward to this material in the near future.

BUY-SELL-TRADE COLUMN -

This section of the "Newsletter" is offered as a FREE service to the membership, providing an opportunity to advertise for specific needs or available items for sale or trade. Ads must be kept short and to the point. Business ads will not be allowed. All ads should be directed to the "Newsletter" editor.

- WANTED - The following books are urgently needed by me:  
Koju by Yoshioka; Hinawaju by Tokoro;  
Hojitsu by Yasunari; Kaho no Kigen to Sono Denryu  
by Arima 1962 (1st three from 1965) Contact:  
Klaus Leibnitz,
  
- WANTED - Book, Japanese Orders and Medals by Orders & Medals  
Society USA 1967. Also, info on swordsmith, Geishu  
ju Isumo Daijo Masamitsu. SS Taikan p.498/499, Hawley  
MA252, FS S328. Contact: C. Veen,
  
- WANTED - Swords and rubbings of Sendai smiths, particularly  
all Kunikane, Kanekura, Yasutomo, Sadatoshi.  
Contact: Peter Bleed,
  
- WANTED - Swords/info of Satsuma School kotō/shintō, Tsuntoshi  
and Koretoshi (SS), Bizen Hisamitsu (c.1512), katana  
in ito-suguha by any Sukesada. Contact: George Icke,
  
- WANTED - Kodzuka, shakudo, nanako-ji w/gold takabori sparrow  
and bamboo motif; Wakizashi tsuba, iron w/dragonfly  
in silver inlay or sukashi-bori. Contact: Robert  
Masamori,
  
- WANTED - Wakizashi, Osaka shintō by Kunisada; katana stand.  
contact: Roy Hashioka,
  
- WANTED - Quality gendai and hand forged guntō blades. Contact:  
G. Bailey,
  
- WANTED - Books, Swords of the Samurai by Lumir Jisl; Mfgs.  
of Helmets & Armor, 16th Cent. Japan by Kozon and  
Robinson; Armor Book in Honcho-Gunkiko, Robinson.  
Contact: Douglas McDonough,
  
- WANTED - Wakizashi by Yoshiyuki, signed Mutsu no Kami Yoshiyuki.  
Hawley Y0665, son of Yoshikuni. Cash/trade. Contact:  
Rick Mantegani,
  
- WANTED - Kogai and ensuite menuki (one or both items). Dragon  
in waves and dragon around ken blade. Needs quality.  
Also wanted: Kaigunto mntd. sword (WW2 naval), D-type  
w.same' saya. Trade civilian mntd.sword, armor or  
fittings, or cash. Contact: Nigel Willey,

BUY--SELL--TRADE cont'd.

- FOR SALE - Juyo Token Nado Zufu Nos. 19,20,21. Sell to best offer. Contact: Han Bing Siong,
  
- FOR SALE - Kotō tantō, mumei, shirazaya, hirazukuri, good condition, 13 7/8" - \$300; Shintō tantō, shirazaya, shobuzukuri, mumei, tired condition - \$150, or trade for fully mntd. wakizashi. Contact: Ron Rutkowski,
  
- FOR SALE - Japanese armor, mid/late Edo, black lacquer, blue lacing, complete (except shoes), good condition. \$2975 + shipping. Contact: Roger Dunn,
  
- FOR TRADE- Woodblock print, 9½ x 14 (framed) picturing male in black robe, Edo hairstyle, long katana in sash. Pictured tying back sleeve, preparing for fight. Trade for mntd. katana or shirazaya katana. Contact: A. Crichton,
  
- FOR SALE - An interesting book is offered by none-member, and it might be of interest to someone here. It is entitled "How To Use Sword", 1934 - Army manual of Japanese. Japanese text/line drawings. Best offer situation. Contact: John O. Pope,
  
- FOR SALE - Iron tsuba and other kodogu, quality work. Sell or will trade for shakudo menuki or early kodogu. Contact: Newsletter editor. (write for listing)

MUSEUM EXHIBITION AND LECTURE SERIES -

Several members have informed the NL that the Washington State University Museum of Art, Pullman, Washington, plans an exhibit entitled: "Swords of the Samurai: Japanese Arms and Armor from Northwest Collections". An illustrated catalogue is also planned and is available from the museum bookstore. Lectures and a film series is also planned. Exhibition dates are February 6th through March 3rd.

This sounds like a fine effort and an exhibition program well worth attending if possible. For further information, contact the museum at Pullman, Washington

1980 TREASURER'S REPORT -

Cash on hand 1/1/80	Savings Account	\$ 7,964.03	
	Checking Account	800.84	
		<u>\$ 8,764.87</u>	\$ 8,764.87
Income	Dues	\$ 7,960.00	
	Supplies Sales	8,993.51	
	Interest-Savings	158.20	
	Interest-Certificate	1,050.68	
		<u>\$18,162.39</u>	\$26,927.26
Expenditures	Publications	\$ 5,665.92	
	* Postage (misc.)	854.21	
	* Clerical	597.00	
	Supplies Purchased (for resale)	4,215.83	
*approximate figures	Printing (misc.)	547.84	
	TKK '79 expenses	373.79	
	TKK '79 profits share to Token Study Gr.	345.00	
	Library additions	235.00	
	* Misc. expenses	257.88	
		<u>\$13,092.47</u>	\$13,834.79
Cash on hand 12/31/80	Savings Account	\$ 2,372.91	
	Savings Certificate	10,000.00	
	Checking Account	1,461.88	
	Grand Total	<u>\$13,834.79</u>	

Explanation -

Several items should be mentioned at this time to clarify the above Treasurer's Report.

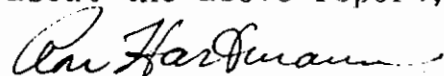
Due to the amount in our savings account, a high interest Money Market Certificate was taken out early last year. This six month certificate will be renewed every maturity unless the money is needed by the Society.

There were additional expenses dealing with Token Taikai '79. These were paid and divided equally between JSS/US and Token Study Group. Profits from the "Meibutsu" catalogue sales, solely handled from this office, were also divided between our two organizations.

Several library additions were purchased, the most costly being three volumes of "super Juyo" books. These have not yet arrived at this writing but will be placed in the library upon their delivery.

Supplies purchased for resale continue to be a large amount of our report. The supplies sales is a very desirable benefit for the membership and also gives the Society a good return on money invested. All supplies offered are well below normal retail prices and are offered as a membership benefit.

If anyone has any detailed questions about the above report, feel free to ask the treasurer.



Ron Hartmann - Treasurer

## GOOD WORDS OF CAUTION -

The latest issue of "Bushidō" magazine has arrived, and while quickly devouring the contents, one particular item seemed of utmost importance to pass along. An article entitled, "Beware!..The Box" by Betty Killam points out the danger of shipping tsuba in a tsuba storage box. In this case (illustrated by a scratched tsuba!) often (usually) the retainer is knocked loose by handling and the retainer "nails", then exposed, will damage the tsuba! The word of caution being to place your tsuba in a pocket-type felt carrier with flap and tie string. Do not trust your tsuba box for shipping or carrying to shows! The same caution goes for menuki, fuchi-kashira, kodzuka-kogai, etc. They too can become loose and be damaged either from the box or by rattling amongst themselves. Always use padding when shipping kodogu (or the felt carrier). Swords suffer the same fate, often worse! Never ship a bare blade....how well I recall one of my swords arriving at a friends house "with kissaki sticking out of the package!!!", and also the time a mounted blade arrived with kissaki sticking through the saya!. It is always good to remove the tsuka and to heavily wrap the nakago (behind the habaki) with nylon reinforce tape, and then shipping with blade in saya (the whole being wrapped in heavy paper, cloth, or plastic.). A simple mekugi can not survive the treatment of the Postal Service, very often. Good packaging is the key word. Avoid movement of the items packaged and provide a very strong and secure container (one which will not fold up under rough treatment). The items you are shipping have survived hundreds of years.....what a sad note to damage them now by our mishandling!

## DALLAS SHINSA PAPERS -

John Yumoto has informed the "Newsletter" that the papers on "blades" from the 1980 Dallas shinsa have been received and have been sent to their owners at this time. Fittings papers have not yet been received, but are expected soon. Anyone who is expecting kodogu certificates should "hang in there" as they will be arriving from Japan soon. Anyone expecting "sword papers" who have not yet received these should perhaps contact John and mention to him that those specific papers have not been received to date. (John will also be at the Birmingham show and will be able to answer some of your questions at that time perhaps.)



\*\*\* TRADE MARK \*\*\*

## **K. E. SKAFTE • NYKOBING F. • DENMARK**

Specialist Bookseller for Japanese Arms&Armor

For some time now I have the pleasure of being a member of the JSS/US and study eagerly the always inspiring Newsletters. In consequence my interest for especially Sword Furniture has grown - and so has my stock of books about it.

So, when adding our stock of good literature on Blades and Armor, I think we are well equipped to meet fair wants from any collector anywhere.

Our latest catalogue is yours for the asking.  
Best regards until next .... yours SKAFTE

## SOME CLOSING THOUGHTS -

1981 DUES NOTICES HAVE BEEN SENT. If you received a notice for your 1981 dues, please return this notice with payment as soon as possible. Your Treasurer and Secretary will be most grateful!

Several members have expressed a "fear" of submitting articles to the publications because of the public criticism to which they would be subjected to. Please....do not hold back when it comes to writing about your research findings. True, all public material is subject to criticism, but constructive criticism will advance one's learning. Not writing an article will only avoid advancement to higher learning. Nobody will be crucified for writing an article (as long as we remember Mr. Leibnitz's advice). The publications are always in need of research papers dealing in specific areas of study. Please do not be afraid to share your findings.

Bill Trevino had an ad in the last "Newsletter", asking for junk swords for research. Bill was going to use this steel for some tsuba-making experiments, but was also thinking about building a display for our library. The display was to have sections of swords, polished to bring out grain structure, by which one could actually "see" various types of hada and other sword characteristics. With Bill's death, this project has also died....unless we could get someone else to follow up on it. Food for thought?

An up-dated MEMBERSHIP ROSTER and SUPPLY LIST/LIBRARY LIST is in the process of being typed. It will be included in the next mailing of the "Newsletter".

A "Publications Committee" is being organized by the Society. Anyone who feels that they could contribute to this Committee by use of particular talents should advise the new Chairman immediately, of your desire to participate. Both "Idea" members and "Workers" are needed.

Let 1981 be your year to become involved, be it an extensive research article contribution, the sharing of an interesting sword oshigata, or by advancing the Society by word-of-mouth.

**NEWSLETTER DEADLINE** - The next issue of the NEWSLETTER will be mailed to members during the first week of April. All material intended for inclusion must be in the hands of the editor at least ten days prior to this week.

**ADVERTISING POLICY** - Paid advertisements will be accepted for publication in the Society NEWSLETTER. Ad contents must be restricted to services and items for sale. High-pressure type ads and ads not befitting the format of the NEWSLETTER will not be accepted. DESCRIPTIONS AND ATTRIBUTIONS OF ITEMS ADVERTISED ARE THE SOLE RESPONSIBILITY OF THE ADVERTISER.

**ARTICLE POLICY** - Articles of a research nature are of course always welcomed for publication in the Society journals. The Society will pay a \$25 Honorarium to the author of original research or reporting articles when of sufficient stature. Brief articles and news items will not be awarded this Honorarium but are nevertheless solicited. CONTENTS OF PUBLISHED ARTICLES AND AUTHENTICITY OF ILLUSTRATED ITEMS IN THE SOCIETY JOURNALS AND PUBLICATIONS ARE THE SOLE RESPONSIBILITY OF THE AUTHORS OF SAID ARTICLES.



# OMINO INTERNATIONAL INC

## NIHON TO ZUIKAN BY GISAKU KATAOKA

- \* Information on Shinto and Shin Shinto Blades. 240.00
- \* Mr. Kataoka's 1977 publication of "Nihon To Zuikan" contains 1,100 Oshigatas of Excellent and Historically Important Swords chosen from 4,000 Oshigatas collected since 1951.
- \* Mr. Kataoka is soon to publish a new book on Koto Blades.

## MINO TO TAIKAN BY THE TOKEN RENGO

160.00

- \* This Japanese Art Sword Book was published in 1975 and was written by Kazuo Tokuno of the Token Rengo Kai (A Japanese Art Sword Society).
- \* This book was the first book to deal with information on the Old Mino School as well as the New Mino School and its swordsmiths.
- \* There are 500 pages in this book and the Oshigatas are very clear and easy to read.

- " New Shin Shin To Taikan " by Kasho Iimura 250.00  
Revised edition of the " Shin Shin To Taikan."  
 This new edition is in 2 volumes and has an additional 260 life-sized oshigatas.
- " Echizen No Kami Sukehiro Taikan " by Kazuo Iida 180.00  
 This new book contains information on the Sukehiro School; 460 photographs and oshigatas.
- " Yushuto Zuroku " by the Nihon Token Hozonkai 135.00  
 This recently published book contains the first collection of N.T.H.'s best oshigatas from its 109 meetings held since 1960; 150 life-sized oshigatas; volume of English translations is included.
- " Inoue Shinkai Taikan " by Shinichiro Nakajima and Kazuo Iida 160.00  
 Information on the Inoue Shinkai School.

## F. MISCELLANEOUS JAPANESE SWORD ACCESSORIES

- F1. Sage-o High Quality 1/2" wide, 62 1/2" long 20.00
- F2. Tsuka Ito (Cord for handle wrapping) 1/4" WIDE - TANTO, 1/2" WIDE - WAKIZASHI/KATANA  
 In Dark Green, Black, or Gold, WHITE. 1.25 per foot
- F3. SAME GAWA RAY SKIN 75.00 per piece

\*\* Postage and Handling is included in the prices if ordered within the United States.... AND CANADA.

\*\* Orders from foreign countries - please add 20% to total order..ALLOW 40 DAYS FOR DELIVERY  
 (EXCEPT SWORD BOOKS & POLISHING KIT)

\*\* California Residents - please add 6 1/2% sales tax to total order.