

# Restoring Armour and Swords – Contrasting Points of View

## Part D: *Koshirae*

Bottomley, F. A. B. Coutinho, B. Hennick and W. B. Tanner

Colour images from the article

Figures 1a, 1b and 1c below illustrate the iron *tsuba*, the silver *tsuba* and restored sword with the all-silver *koshirae*, respectively.



← Figure 1a

The 16<sup>th</sup> Century *tsuba* which came with the sword. (This *tsuba* had no *fukurin* (rim), but represents a fishing net.).



Figure 1b →

The adapted *tsuba* in detail.



Figure 1c

The sword as it appears at present.

The *koshirae* now includes the restored silver *tsuba*. The set looks much better matched than it did previously.

Figure 2a



Figure 2b



← Figure 2d

Figure 2c →



Figure 3a  
Kashira replicated by an expert in the U.K.





Figure 3b  
Two views of the complete *koshirae* with the replicated *koshira*

Figure 4 →  
Refinished *saya* in patterned black *urushi*



← Figure 5 *Urushi* repair on a damaged *koshirae*



← Figure 6a

Figure 6b →



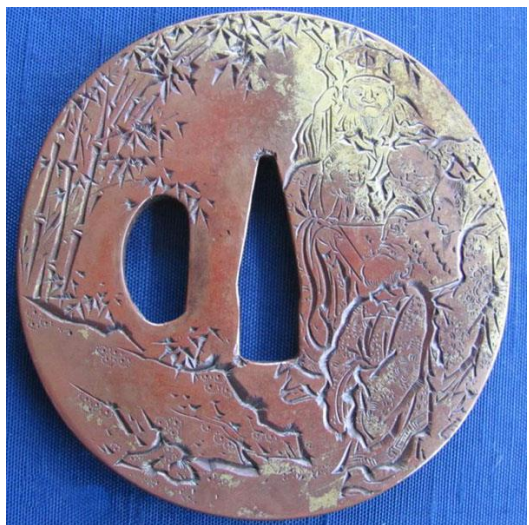


Figure 7a

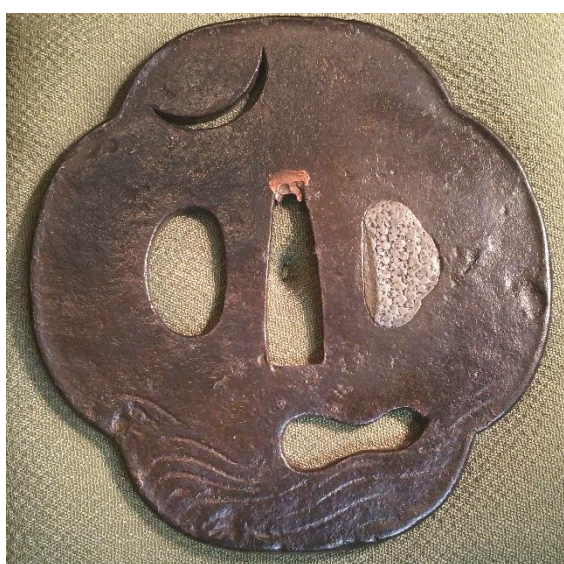


Figure 7b



Figure 8a



Figure 8b

## Study of a SÔTEN Tsuba

By Luca Zanichelli

Page 46 Figure 2



Page 47 Figure 36



Page 48 figure 47

